



District 6 Code Analysis - FY18

Data extracted for Code cases opened between October 1, 2017 - Sept 30, 2018

All Cases

Reported Complaint Type	Total	Commercial	Neighborhood	Multifamily
Land Use	365	89	265	11
Property Abatement	328	42	239	47
Structure Condition	271	88	166	17
Work Without Permit	40	5	33	2
SWS Chp 15	1	1	-	-
Total	1,005	225	703	77
Total Percent of Citywide Complaints	3.1%	3.1%	3.9%	1.1%

Repeat Offenders, Short Term Rentals, and Rooming and Boarding Homes

*Filtering cases by complaints occurring at Repeat Offender Properties (ROP), Short Term Rentals (STR), or Rooming and Boarding Homes (RBH). Austin Code categorizes them as Operating Licenses types.

Case Code	Total	Commercial	Neighborhood	Multifamily
Repeat Offender Properties	18	13	2	3
Short Term Rentals	57	11	46	-
Rooming and Boarding Homes	1	-	1	-
Total	76	24	49	3
Total Percent of Citywide Complaints	0.2%	0.3%	0.3%	0.0%

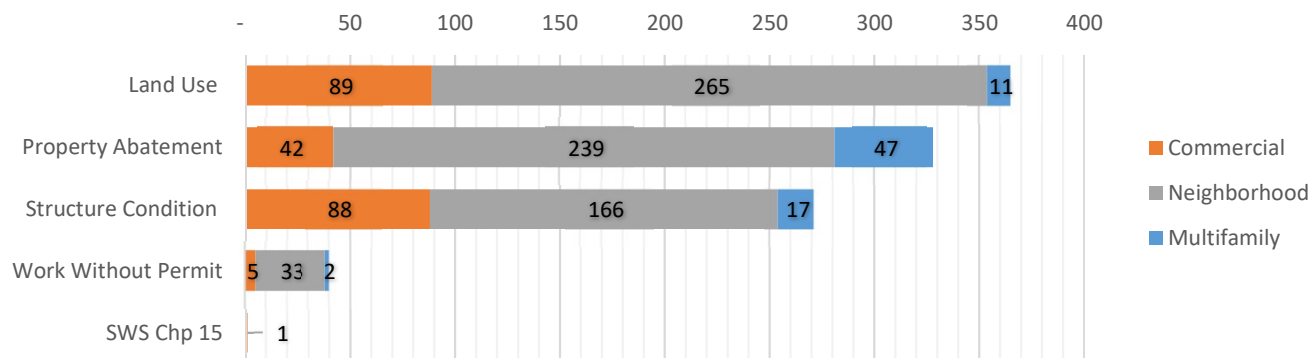
Reported Complaint Type	Total	ROP	STR	RBH
Land Use	365	7	56	1
Property Abatement	328	1	-	-
Structure Condition	271	10	-	-
Work Without Permit	40	-	1	-
SWS Chp 15	1	-	-	-
Total	1,005	18	57	1
Total Percent of Citywide Complaints	3.1%	0.6%	3.4%	1.0%

Council District Matrix - All Cases

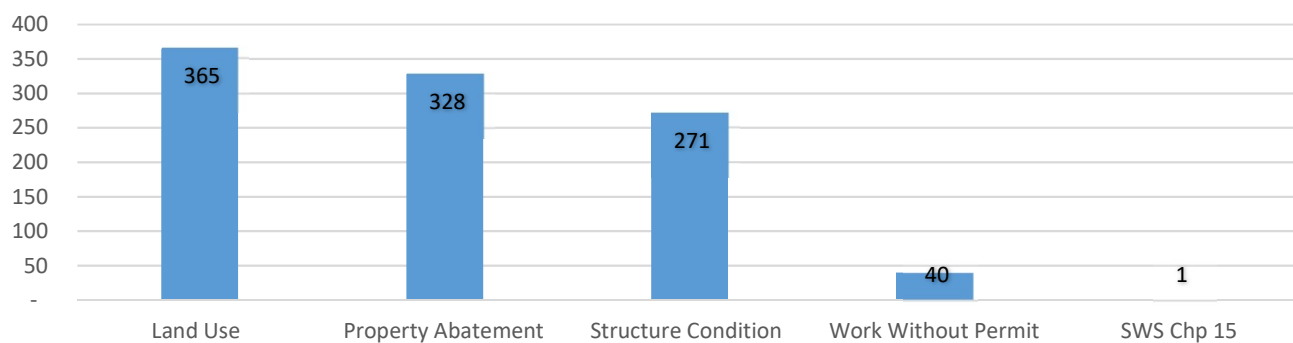
This matrix shows your Council District's percentage of total complaints in comparison with others.

Council District	% Total	% Commercial	% Neighborhood	% Multifamily
District 1	13.6%	9.2%	15.0%	14.7%
District 2	11.4%	12.6%	12.3%	7.9%
District 3	13.3%	23.4%	9.9%	11.8%
District 4	15.3%	8.4%	13.0%	28.7%
District 5	7.1%	4.2%	9.1%	4.8%
District 6	3.1%	3.1%	3.9%	1.1%
District 7	8.1%	10.0%	8.7%	4.3%
District 8	3.9%	1.8%	6.0%	0.7%
District 9	16.9%	21.4%	12.7%	23.0%
District 10	7.0%	5.9%	9.0%	2.9%

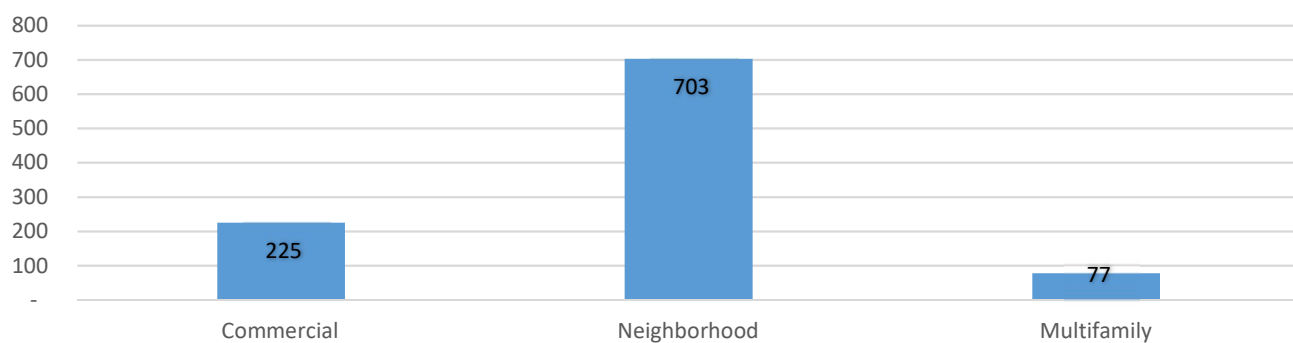
Complaint Types by Team



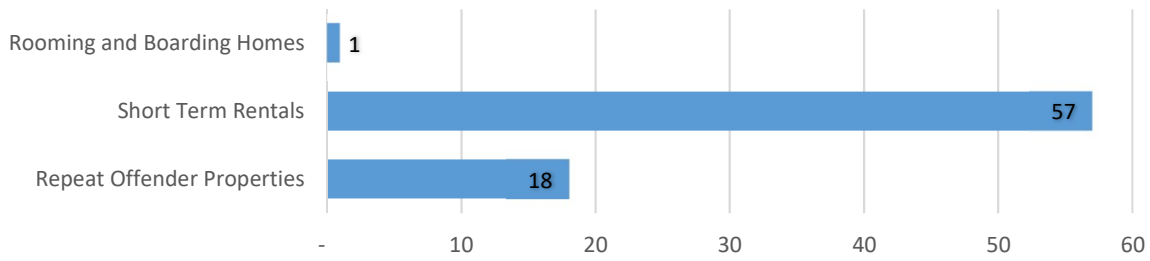
Cases by Complaint Type



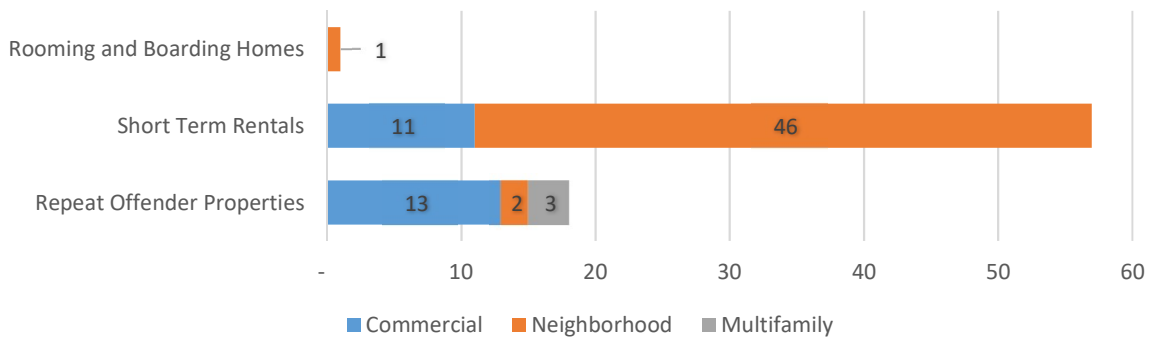
Cases by Team



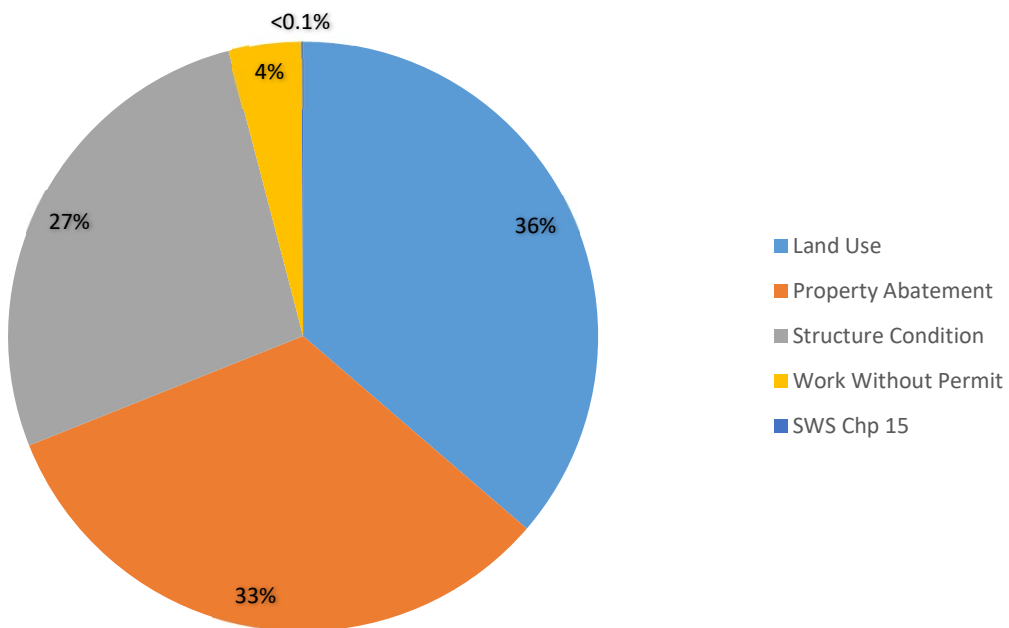
Cases by Operating License Types



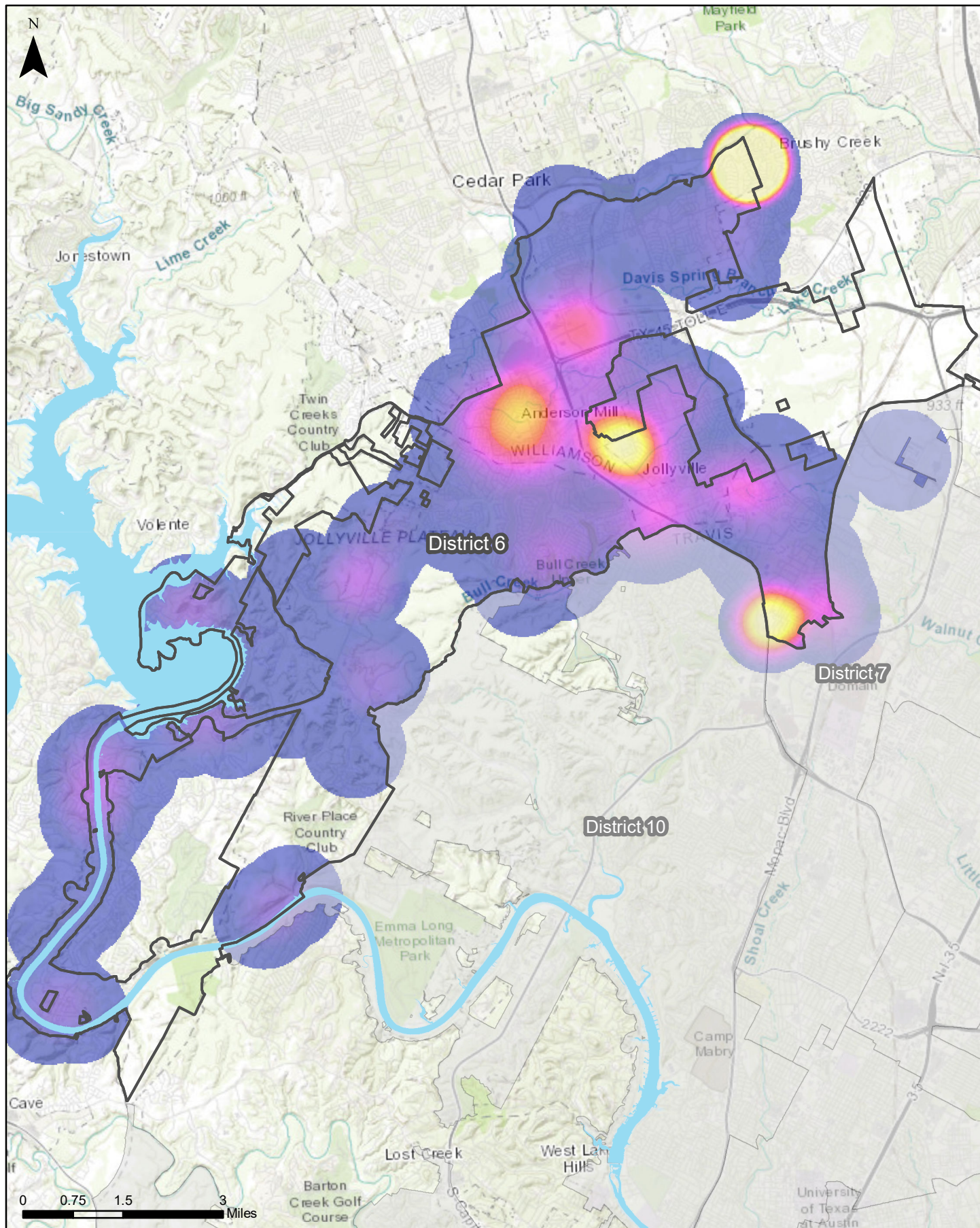
Operating License Cases by Team



Operating License Complaint Types



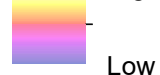
Council District 6



This map examines the density of Code Cases opened in District 6

Density of Cases

High



Low

AUSTINCODE
DEPARTMENT

Map generated on:
6/24/2019